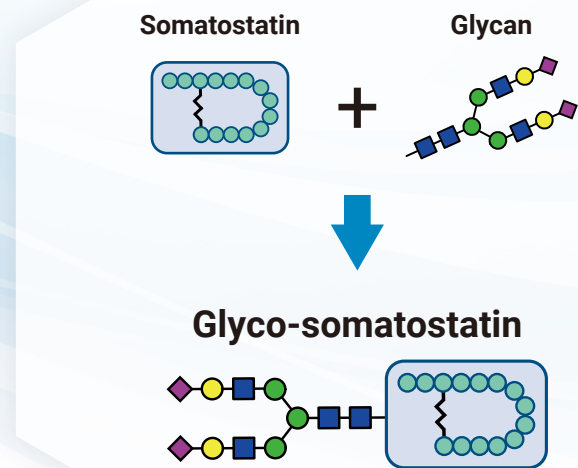




Novel somatostatin agonist developed by glycoengineering

Development concept

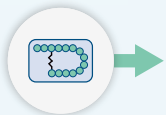
GlyTech, Inc.'s unique chemical glycosylation technology can be used to conjugate homogenous glycans to various drug modalities (peptides, proteins, oligonucleotides, etc.). Our research on the peptide hormone somatostatin has led to the demonstration of this technology in the development of glyco-somatostatin – a homogeneously glycosylated molecule which retains a natural somatostatin backbone. This new type of somatostatin analog combines both a high plasma stability and a similar pharmacological property to that of native somatostatin (activity towards all receptor subtypes).



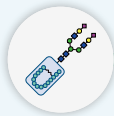
Benefits of glycosylation

Improved plasma stability

Natural somatostatin



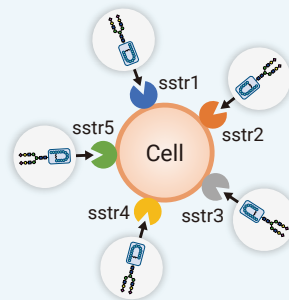
Glyco-somatostatin



High stability

Similar pharmacological property to that of natural somatostatin

(activity towards all receptor subtypes)



Improved aqueous solubility

Without glycosylation



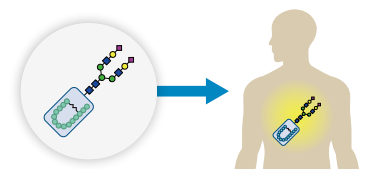
With glycosylation



Note: Model experiment carried out on poorly soluble peptide (not development candidate)

Development status (as of May 2025)

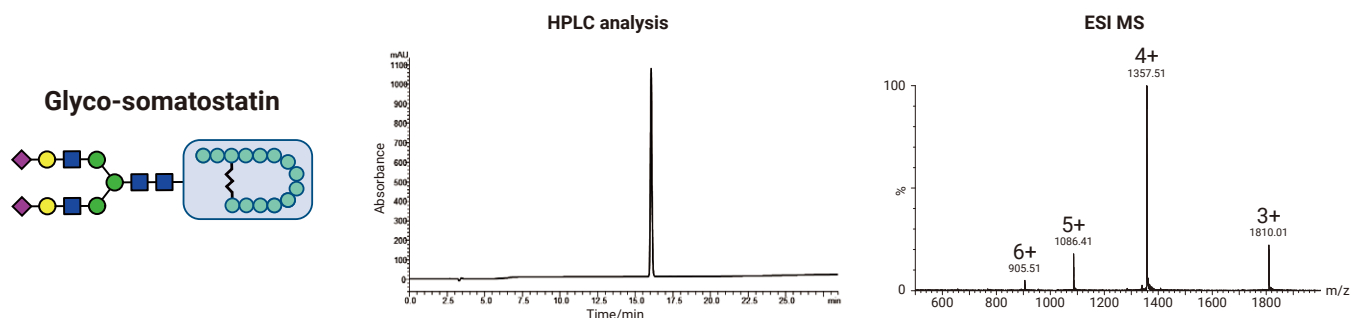
The efficacy and safety of our development candidate have been confirmed in clinical trials. We are currently seeking interested partners for the next stage of development.



Characterization & Evaluation

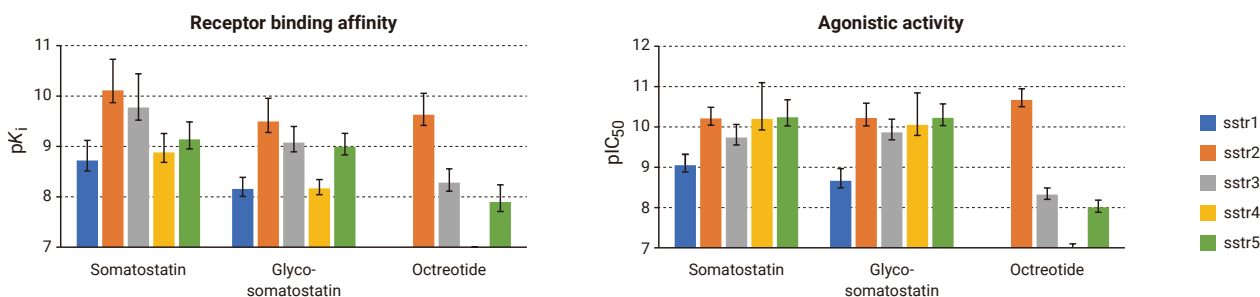
1 A single molecule by chemical synthesis

Our development candidate is chemically synthesized, resulting in a homogenous structure, including its glycan structure.



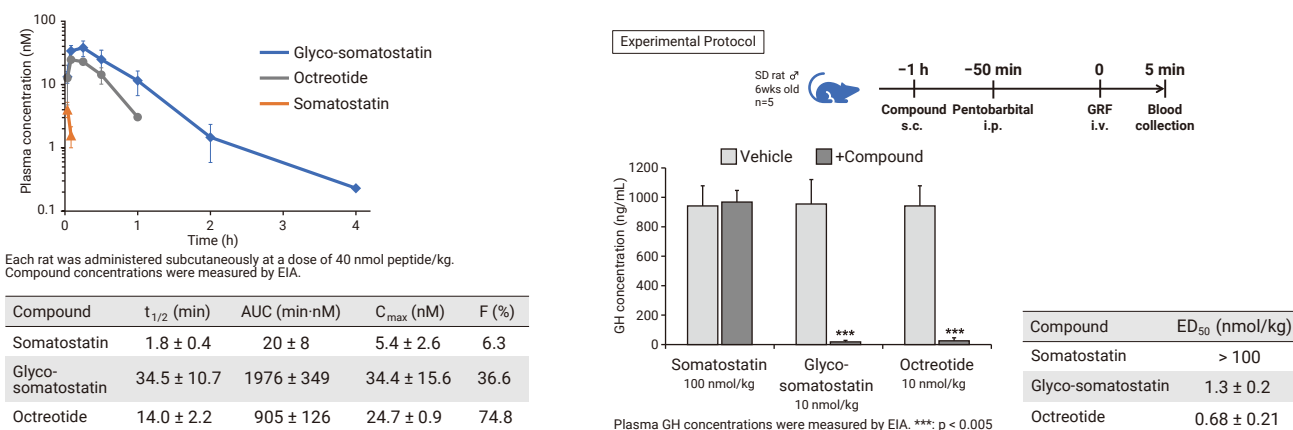
2 In vitro evaluation

A similar agonistic activity and binding affinity to those of natural somatostatin were confirmed.



3 In vivo evaluation

A high blood concentration and a potent pharmacological effect were confirmed.



Pipeline

ID	Target indication	Stage					Technology
		Discovery	Pre-clinical	Phase 1	Phase 2	Phase 3	
GT-02037	Acromegaly						Glycosylation
GT-15019	Multiple sclerosis						Glycosylation
GT-11322	Alzheimer's						Nose-to-Brain
GT-11474	Treatment-resistant depression						Nose-to-Brain

In addition to out-licensing of our pipeline, we offer contract research services related to our glycan technologies. Please contact us to learn more.



www.glytech-inc.com
glytech-info@glytech-inc.com

@GlyTech
 @GlyTech

GlyTech, Inc.
Glycoscience for Better Health